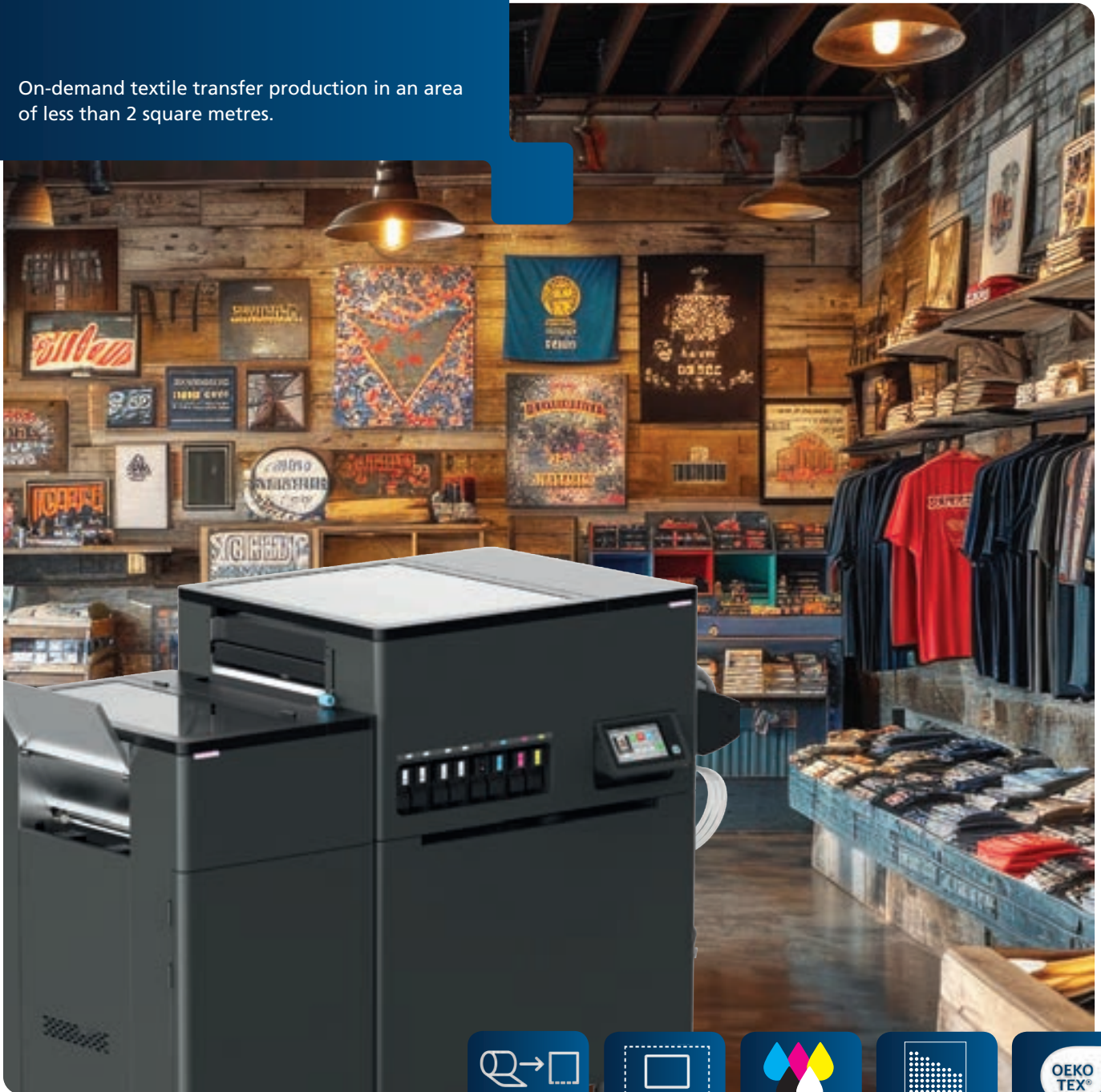


Direct-to-film printer with integrated powder shaker and sheet output

XTF D430

On-demand textile transfer production in an area of less than 2 square metres.



texgraff

By MULTISYSTEM TECHNOLOGY

www.texgraff.com



DTF
Roll to Sheet
up to 40x50 cm



Small Footprint
< 2m²



CMYK + White



1200 x 1200 dpi



OEKO TEX®
ECO
Passport



One-off Production



Dark Fabrics



White Fabrics



100 % Cotton



100 % Polyester

Print only what you need. Sheet by sheet, whenever you want!

Integrated cutting unit for flexibility from 1 sheet

The XTF D430 offers you maximum flexibility. Gone are the days of roll printing. With the help of the integrated cutting unit, you can set the sheet size yourself from 250 to 500 mm.

Dual print engine with 8 high-performance print heads

The XTF D430 features two print carriages, each equipped with four RICOH print heads designed for maximum performance and reliability. The white print heads are protected by the automatic wet capping system.

Motorised unwinding for perfect tension

The motorised unwinding keeps the material tension constant as possible from start to finish, enabling largely unattended printing and high registration accuracy.



Image for reference only

Closed system – no dust, very quiet

The newly developed powder unit prevents dust from escaping, and refilling is carried out automatically via a sealed cartridge. Simple, clean, quiet.

Integrated drying unit with new technology

With its innovative drying technology, the XTF D430 ensures a perfect and uniform drying result regardless of the printed designs.

Integrated sheet tray – flexibility built in

Prepare your print jobs at your leisure – the XTF D430 prints your transfers unattended and deposits them in the integrated sheet stacker.

Maximum productivity in 2 square meters: industrial production in a cube design



Efficiency redefined: on-demand production without waste

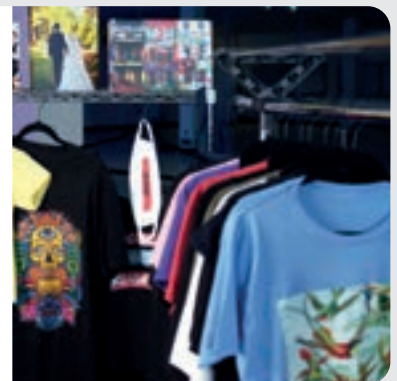
Flexibility is crucial in production, yet roll-fed systems often cause significant material waste due to lead-in and lead-out sections. The XTF D430 solves this problem: producing transfers exactly as required directly onto sheets – with absolutely no waste. A fully automated workflow handles precise cutting, powder application and drying right through to the finished product being placed in the stacker.

Print jobs can be printed immediately as needed without having to wait for additional jobs to be queued. Ideal for the production of single runs, reprints or print jobs that have been prioritised retrospectively.

Compact power: maximum performance in a minimum of space

The XTF D430's intelligent cube design requires less than two square metres of floor-space and, at just 80 cm wide, fits through any standard door. This makes it the ideal in-shop solution or for production facilities that need to save space yet still want to produce professionally.

The system delivers finished transfers in the standard 40 x 50 cm format for direct use on the heat press. Eight Ricoh print heads enable up to 34 transfers per hour, whilst the nesting function in the ColorGATE Container places the various jobs on a single sheet in a way that minimises material waste.



Industrial precision: reliability meets high-end quality

The technical specifications of the XTF D430 are designed for maximum reliability with minimal maintenance. Original Ricoh drop-on-demand printheads deliver industrial precision at 1200 dpi and guarantee a long service life.

A highlight is the patented Wet-Cap mechanism: it effectively prevents nozzle clogging, ensuring smooth operation, particularly when using white ink. The XTF D430 thus combines industrial durability with consistently first-class results for every print job.

ColorGATE TPS – Colour accuracy and digital PDF workflow

The XTF D430 comes with the leading ColorGATE Textile Productionserver RIP software (TPS). This guarantees industrial-grade colour accuracy through professional colour management and spot colour libraries for precise reproduction.

A smooth PDF workflow is ensured by the auto-nesting function and QR code generation for each object. With the print cost calculator, you can keep a close eye on costs at all times.



XTF D430

TECHNICAL SPECIFICATIONS

XTF D430 Printer & GST 430 Powder shaker

System:	Roll-fed printer with automatic cross-cutter, integrated powder shaker/oven, and RIP software*
Print heads:	8 piezoelectric drop-on-demand print heads from RICOH with variable droplet sizes from 3 to 37 picolitres
Colors:	Cyan, magenta, yellow and black (4 channels), white (2 channels) plus cleaning (2 channels)
Hotmelt Powder:	1 kg sealed cartridge
Resolution:	1,200 x 1,200 dpi (maximum)
Media:	17" (432 mm) DTF Film
Sheet size:	500 x 432 mm max. 250 x 432 mm min.
Maximum print size:	467 x 386 mm
Ink:	Water-based pigment inks, 500 ml cartridges, ECO PASSPORT certified
Speed:	Up to 34 sheets per hour (8-pass 1,200 x 1,200 dpi) Time to first page: 8–16 minutes (8-pass 1,200 x 1,200 dpi)
Sheet output:	Output tray for up to 40 sheets
Heating unit:	Teflon-coated heating bed, max. 170°C
Filter system:	Integrated air filter system with HEPA and carbon filters
Operating conditions:	Temperature: 15–32 °C Relative humidity: 45–80 %
Noise emission:	67 dB(A) or less
Dimensions (W x D x H):	1,567 x 798 x 1,316 mm
Weight:	245 kg total (100 kg Printer unit) (135 kg Powder shaker)
Power supply:	2 sockets, 100–240 VAC, 50–60 Hz, 4 A or more
Power consumption:	Approx. 90 W (standby); Maximum: 2,650 W
(operation) Connectivity:	Ethernet, USB Type A (standard); Wi-Fi (option)
Supported RIP software:	ColorGATE Textile Productionserver, Kothari, Fiery CadLink Digital Factory, Neo Stempa
Maintenance:	Temperature and humidity monitoring, maintenance alerts, automatic printhead cleaning, precise ink monitoring, automatic wet-cap function, automatic printhead cleaning with wiper
Certifications:	NRTL (UL 62368-1, CAN/CSA 62368-1), CB (IEC 62368-1), LVD (Niederspannungsrichtlinie (EN IEC 62368-1)), FCC Klasse A, ICES-003 Klasse A, CE EMC (EMI): EN 55032 Klasse A, EMS: EN 55035, Oberschwingungen: EN 61000-3-2, Flicker: EN 61000-3-3, EMF: EN 62311, VCCI Klasse A.
Environment:	RoHS, REACH

*) System requirements for ColorGATE Productionserver

Recommended applications:	Photoshop / Illustrator / CorelDraw
Compatible file formats:	TIFF, PNG, JPG, BMP, PSB, PSD, PDF, PS, EPS
Operating system:	Windows 10 (Pro, Enterprise), Windows 11, Windows Server 2016, Windows Server 2019, Apple macOS with Parallels Desktop
Processor:	CPU: Intel Core i3-2100 or AMD Athlon II X2 340 (or better)
RAM:	4GB RAM (minimum)
Hard disk space:	120GB free hard disk space (minimum) Screen
Resolution:	1280 X 1024

RICOH's water-based pigment inks are ECO PASSPORT certified.

